

PPC-1000 Series 1.25 Gbps Gigabit Ethernet Mm-Wave Link



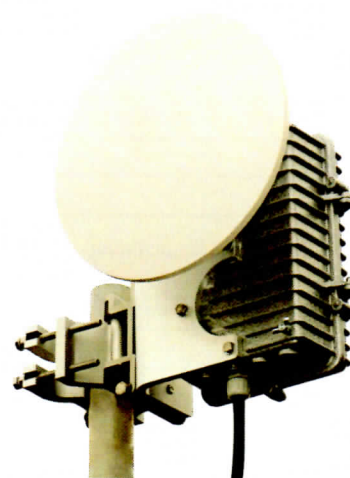
- Frequency band: 71–76/81–86 GHz; 40.5–43.5 GHz
- 1250 Mbps Gigabit Ethernet Interface
- True Full Duplex Operation
- Secure communication due inability to intercept the laser-like beam transmission at free air
- Solid reliability with Fiber-like Performance
- Distance ranges of up to 5 mile (8 km) at 10 mm/h rain for 71–76/81–86 GHz frequency band
- Distance ranges of up to 6.7 mile (10.8 km) at 10 mm/h rain for 40.5–43.5 GHz frequency band
- Easily installed, Zero maintenance
- Compact Cassegrain type antennas
- Quasi-optical (laser-like) propagation of millimeter wave emission
- EMI interference free

Applications

- Wi-Fi or mobile network backhaul
- Business WAN
- FSO backup
- IP telephony gateway connections
- Metropolitan area networks
- Rapid-deployment emergency communications

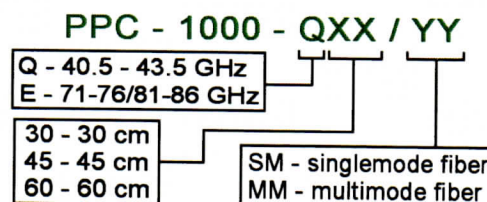
Description

Elva's full-duplex Gigabit point-to-point link provides interconnection between remote LAN segments at ultra high speed and utilizes Gigabit Ethernet protocol, which is the evolving standard for switches and routers available from a variety of telecommunication equipment manufacturers. The PPC-1000 product has 1000 Base-SX connections at each end of the wireless link and transparently establishes the link outputs. The resulting connection can replace a fiber-optics cable physically connected end-to-end. The wireless mm-wave Gigabit link provides fiber equivalent performance, reliability and security but with no high deployment cost associated with outdoor fiber installations.



How to Order

Specify Model Number



Example

PPC-1000 link with 60 cm antenna diameter and single mode fiber optic cable for 40.5–43.5 GHz frequency band has product code PPC-1000-Q60/SM.